

JODOGAHAMA BEACH



COME JOIN US

5TH INTERNATIONAL PACIFIC MARINE EDUCATORS NETWORK CONFERENCE

JULY 10-16, 2014 • TOKYO + IWATE, JAPAN



INTERNATIONAL
PACIFIC MARINE
EDUCATORS
NETWORK

Contact! Connect! Convey!
With and through the ocean.

The International Pacific Marine Educators Network (IPMEN) is a network of marine educators whose shared vision is to nurture a fuller understanding of the ocean's value, leading to informed, responsible and creative decisions that conserve and restore the integrity of the ocean's ecosystems in the Pacific. The mission of IPMEN is to foster collaborative relationships that will create the resources, programs, training and leadership necessary to build ocean literacy at every level of society in the Pacific region. Since its inception in Hawaii in 2007, IPMEN has held biennial conferences in Australia (2008), Fiji (2010) and Chile (2012).

Marine educators who share the IPMEN vision and goal are invited to the IPMEN 2014 conference to be held in Japan. The week-long conference will begin in Tokyo and then move to Iwate, the area devastated by the March 11, 2011, tsunami.

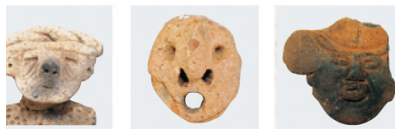
“Bringing hope and pride to the devastated area is an important aspect of the conference. The people are faced with depopulation and a declining fishing industry. They have been encouraged to rebuild their homeland through their traditional resilience but are at a loss as to how to do this. Through networking with the local integrated coastal management system, which includes not only fishermen and industry but also housewives and school children, it is hoped that the IPMEN delegates will be able to help advance this local agenda while furthering IPMEN's mission.”

Conference chair, Tsuyoshi Sasaki
Tokyo University Marine Science and Technology (TUMSAT)
Japanese Aquatic Marine Environmental Educators Association

5TH INTERNATIONAL PACIFIC MARINE EDUCATORS NETWORK CONFERENCE JULY 10-16, 2014 • TOKYO + IWATE, JAPAN



CRUISE ON MIYAKO BAY



JOMON VILLAGE ARCHAEOLOGICAL SITE



TSUKIJI MARKET IN TOKYO

Through presentations, discussions and hands-on experiences, the IPMEN 2014 conference will focus on how marine educators can help to a) address coastal recreation areas that have been devastated by natural disasters; b) prepare coastal areas for natural disasters; c) balance traditional ecological knowledge with science and technology, including within the fisheries industry; and d) foster an understanding of food cultures and traditions, including within fisheries.

The anticipated cost for the conference including accommodation and ground transportation is US\$1,000 per registrant. Planned events will educate delegates about both cultural and marine science aspects of Japan while providing firsthand insight on the conference themes and furthering the IPMEN mission.

- Tsukiji Market, the world's largest wholesale fish and seafood market; Imperial Palace; and Science Future Museum
- Lecture at the Ministry of Education
- Workshop at a junior high school on Sato-Umi (high productivity and biodiversity in the coastal sea area with human interaction)
- IPMEN presentations and discussion at TUMSAT
- Presentations at Iwate University on integrated coastal management of Miyako Bay
- Cruise on Miyako Bay to explore the 300 million-year-old geologic formation
- Tour of the 6,000-year-old Jomon village archaeological site
- Visit of the SUISAN (fisheries) museum, village and recreation area; traditional fisheries; and dinner with Japanese drumming
- Aquaculture lecture at Iwate University
- Visit tsunami devastation area

The conference concludes back in Tokyo. Those wishing to stay longer can travel on their own to Kyoto, a two-hour trip by train. For more information and to submit a presentation abstract, contact Tsuyoshi Sasaki, 2014 IPMEN conference chair, at t-sasaki@kaiyodai.ac.jp or the IPMEN International Committee at ipmenemail@gmail.com or go to www.ipmen.net or to www.facebook.com/Ipmen2014Japan.